

# SBE CHAPTER 70 - CLEVELAND/AKRON

# SBE 70 MINUTES

Named SBE's "Best Chapter Newsletter"

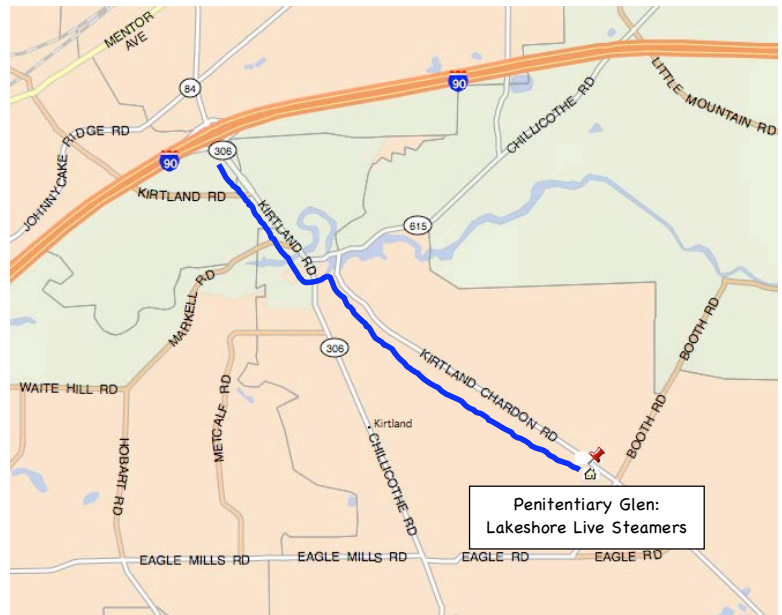
<b>Penitentiary Glen Reservation</b>	<b>8668 Kirtland-Chardon Road, Kirtland 44094</b>	<b>Gather after 5pm Meeting at 7:30pm</b>	<b>August 2010 Vol. XVIII Number 7</b>
--	---	---	--

## MEETING DETAILS FOR AUGUST 17th

Happy summer to all the members and friends of SBE Chapter 70! Big chapter thanks go out to Bob Kruppenbacher, Dan Kuznicki, Ron Bartlebaugh and the whole crew at WKSU for hosting the July meeting. We had an interesting presentation on the new low power Nautel transmitters. Pretty cool tech in these babies, they can even play files from your USB memory stick! Thanks to Gary Liebisch for the fine session.

Our next meeting is on Tuesday, August 17th and it's going to be a special one! We will have our picnic gathering and election of officers in Mentor at the Penitentiary Glen Reservation located at 8668 Kirtland-Chardon Rd. Kirtland, Ohio 44094. We get to see Frank Foti's Lake Shore Live Steamers train. Frank has kindly agreed to bring his train in to give rides and show off this real Live Steam train. (See photo on page 2) Bob Charles Basset will be there with a smaller train too.

(Continued on page 2, Column 2)



### Directions To Lake Shore Live Steamers

Take I-90 to the Mentor Route -306 exit. At the top of the exit ramp, turn and proceed south on Rt-306. You will pass Lakeland Community College, on your left. Proceed down the hill. At the bottom of the hill is a light. This is Rt-615, turn left. You will be on this for a few tenths of a mile until you reach another traffic light. Turn right, as this is Kirtland-Chardon Road. The park is exactly 2 miles down on the right side. The name of the park is 'Penitentiary Glen Reservation.'

Pull into the parking lot. Behind the parking lot is where the railroad is located. You will see a picnic pavilion to the right of the parking lot. We are to the side of the walkway that goes over to the pavilion.

# SBE CHAPTER 70 - CLEVELAND/AKRON

## Bill Weisinger update

Chapter 70 Treasurer and engineering friend Bill Weisinger remains out of service in his bout with cancer. Bill has been in and out of Robinson Memorial Hospital and is now back at the Maplewood Care Center in Streetsboro in Room 606.

You can send any communications to him at this address:

Bill Weisinger  
c/o Maplewood Care Center  
Room 606  
1645 Maplewood Drive  
Streetsboro OH 44241



## Chairman's Chat (con't)

Here's a link to the website -

<http://www.lakeshorelivesteamers.com/home.shtml>

The chapter will be supplying the picnic feast so come by and bring a guest! Please try to RSVP me at [blake@uakron.edu](mailto:blake@uakron.edu) or 330-972-6221 to give me an idea of how many folks are coming. You can show up anytime after 5pm. The election meeting will begin at 7:30pm.

Also on the same day you could hit this; Jim Hartzler of the SBE Youngstown Chapter is asking that anyone planning to attend the Taste of NAB Show in Youngstown on August 17th please RSVP to him sometime soon so he can try to get a semi-accurate guesstimate for lunch count purposes. The information link to the show is at <http://www.tech-notes.tv/2010/45-Youngstown.htm> Jim's e-mail address is [hbsradio@yahoo.com](mailto:hbsradio@yahoo.com) <<mailto:hbsradio@yahoo.com>>

Blake Thompson CBNT  
WZIP-FM / Z-TV [www.wzip.fm](http://www.wzip.fm)  
SBE Chapter 70 Program Chair

## VIDEODUB INTERNATIONAL

*For Business & Video Professionals*



Fadi Kdayssi

VideoDub International Inc.  
2504 Fairmount Blvd.  
Cleveland, OH 44106

Phone 216-321-1440  
Fax 216-321-4404  
[fadi@videodubinternational.com](mailto:fadi@videodubinternational.com)

## Gary Liebisch

Regional Sales Manager - Eastern U.S.

Tel: 1 513 576 6400  
Cell: +1 513 289 6322  
Fax: +1 513 672 0600  
[gary.liebisch@nautel.com](mailto:gary.liebisch@nautel.com)

Making Digital Radio **Work.**



# SBE CHAPTER 70 - CLEVELAND/AKRON



## TeleProductions

*Celebrating Fifty Years*

Kent State University TeleProductions is celebrating fifty years of quality service to the university and surrounding community!

Please plan on joining us at our open house

***Friday, September 24 from 4:30pm – 8:00pm***

in Studio A in the Music & Speech Center at Kent State University.

- *Explore our new HD satellite uplink/production truck*
- *Tour our studios and production facilities*
- *See our new ENG equipment*
- *View examples of our work*
- *Meet the TeleProductions full-time and student staff*
- *Browse through memorabilia from the last fifty years*
- *Enjoy appetizers and beverages, too*

Join us for a look back at our history as we work towards the future!

***Look for your invitation to arrive in your mailbox soon...  
and we'll see you in September!***

*If you have any questions, please contact Mark Warzinski at [mwarzins@kent.edu](mailto:mwarzins@kent.edu).*



Visit our chapter website at...  
<http://www.broadcast.net/~sbe70>



## SBE 2010 Certification Exam Schedule



Exam Dates	Location	Application Deadline
February 5-15	Local Chapters	Closed
April 13	NAB Convention	Closed
June 4-14	Local Chapters	Closed
August 6-16	Local Chapters	Closed
November 5-15	Local Chapters	September 17, 2010

## Rewrite the rules of the game.

If you've been waiting for the perfect ProHD Broadcast and Production Camcorder, here is a serious tool for the next generation for shooting HD news, sports, documentaries, multi-camera shows and indies. With 720/60P capture and recording capabilities, JVC's GY-HD250U delivers HD images needed for demanding ENG, EFP and studio use.

The GY-HD250 Camcorder:

- Native 1280x720p CCDs
- Multiple frame rate recording:  
24, 25, 30, 50 & 60p
- Cross converter provides  
720p or 1080i Output
- HD-SDI output w/embedded audio
- Record on tape and/or HDD
- Studio option with CCU

For more information or to schedule a demo, contact

**Tom Shirilla**  
District Sales Manager  
JVC PROFESSIONAL  
440-572-9209 (office)  
216-533-7245 (cell)  
TShirilla@JVC.com



The GY-HD250 Studio-Capable ProHD Camcorder

**JVC**

The Perfect Experience

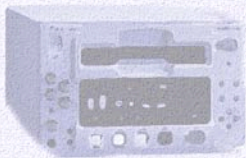
[www.jvc.com/pro](http://www.jvc.com/pro)



# SBE CHAPTER 70 - CLEVELAND/AKRON

## Industrial video CORPORATION

Providing Value Minded Solutions  
to Broadcasters for Over Thirty Years



EQUIPMENT \* INTEGRATION  
SERVICE \* DESIGN

Cleveland Corporate Office  
440-891-9440 ~ 800-352-6150  
Central Ohio Office  
614-509-2360 ~ 800-342-6150  
Southern Ohio Office  
513-624-8666 ~ 888-952-6150  
[www.ivideo.com](http://www.ivideo.com)



"Ohio's Hometown Video Equipment Dealer"

## ProVideo Systems, Inc.

Professional Television Equipment Sales, Service & System Integration

**Mike Siddall**  
Sales Engineer

3212 North High St.  
Columbus, OH 43202  
[www.provideosystems.com](http://www.provideosystems.com)  
[mike@provideosystems.com](mailto:mike@provideosystems.com)

614-261-1272  
800-832-2367

Media &  
Information  
Technologies

# ROSCOR

**Dave Anderson**  
Digital Cinematography  
Business Unit Manager

**ROSCOR CORPORATION**  
1061 Feehanville Drive  
Mount Prospect, IL 60056  
1-847-299-8080 x1354  
fax: 1-847-299-4206  
[danderson@roscor.com](mailto:danderson@roscor.com)  
[www.roscor.com](http://www.roscor.com)

ISO 9001:2000 CERTIFIED

# Telos

AUDIO | NETWORKS

THE BEST WAY TO HEAR FROM THERE

[www.Telos-Systems.com](http://www.Telos-Systems.com)

# Omnia

WORLD LEADER IN AUDIO PROCESSING

[www.OmniaAudio.com](http://www.OmniaAudio.com)

**Jim Armstrong**  
Director of Eastern US Sales  
678-475-1361

# AXIA

THE NETWORKED STUDIO HAS ARRIVED

[www.AxiaAudio.com](http://www.AxiaAudio.com)

# SBE CHAPTER 70 - CLEVELAND/AKRON



Pro Video and Broadcast Systems Integrators and Value Added Reseller. We focus on digital technology and new media projects for the creation, management and distribution of Film, Video, Audio and Data.

## Ingenuity and Practical Insights

ENGINEERING SERVICES    ASSET MANAGEMENT SOLUTIONS  
 WORKFLOW DESIGN        MEDIA PRODUCTION EQUIPMENT  
 STORAGE SOLUTIONS        TAPLESS WORKFLOW SOLUTIONS  
 STREAMING SOLUTIONS      VIDEO EDITING SOLUTIONS

John Connolly, Jr.  
 Regional Sales Manager

CALL OR VISIT OUR WEBSITE  
 800.221.3525    www.mwmg.com



## Chapter 70 Officers

<p><b>Chairman</b>                      Joe Mate                      440.539.5627 (Mobile)                      440.979.0038 (H)  <a href="mailto:joe-K8YN@att.net">joe-K8YN@att.net</a></p>	<p><b>Vice-Chairman</b>                      Ron Bartlebaugh                      WKSU-FM                      330.672.3114  <a href="mailto:bartlebaugh@wksu.org">bartlebaugh@wksu.org</a></p>	<p><b>Program Chair</b>                      Blake Thompson                      WZIP-FM                      330.972.6221  <a href="mailto:blake@uakron.edu">blake@uakron.edu</a></p>
<p><b>Secretary</b>                      Bob Kruppenbacher                      WKSU-FM                      330.672.3114  <a href="mailto:kruppenbacher@wksu.org">kruppenbacher@wksu.org</a></p>	<p><b>Treasurer</b>                      Bill Weisinger, CB RTE                      Weisinger Engineering Services  <a href="mailto:billweisinger@gmail.com">billweisinger@gmail.com</a></p>	<p><b>Certification</b>                      Bill Kozel, CSRE/CBTE                      WEWS-TV5                      216.431.3730  <a href="mailto:kozol@wews.com">kozol@wews.com</a></p>
<p><b>Frequency Coordinator &gt; 1 GHz</b>                      Mike Szabo                      WKYC-TV3                      216.344.3391  <a href="mailto:mszabo@wkyc.com">mszabo@wkyc.com</a></p>	<p><b>Frequency Coordinator &lt; 1 GHz</b>                      Edward Miller, CPBE                      440.773.5656 (Mobile)                      440.746.9989 (H)  <a href="mailto:edward.miller5@cox.net">edward.miller5@cox.net</a></p>	<p><b>Website Services</b>                      Ric Cicchinelli, CBT/CBNT                      330.484.6471 Ext 2822  <a href="mailto:ricchick1@yahoo.com">ricchick1@yahoo.com</a></p>
<p><b>Newsletter Editor:</b>    Bob Long, 88.9/WSTB-FM    330.422.2490    <a href="mailto:bobloug889@gmail.com">bobloug889@gmail.com</a></p>		